

OUR PARTNERS:



Polymer concrete

Polymer concrete is a structural material, like ordinary concrete, in which the aggregate has been replaced by silica sand and where synthetic resins, hardened by the addition of curing agents, have been used instead of cement. One of its important properties is high mechanical and chemical resistance.



Leader in production of precast
polymer concrete units



> SKANSKA - Narutowicz Bridge - Rzeszów



> Budimex - Bypass Road - Międzyrzecz



> Mostostal - Redzinski Bridge - Wrocław

CONTACT DETAILS:

SYSTEMY I TECHNOLOGIE Sp. z o.o.
ul. Kopalniana 7
59-100 Polkowice, Poland

www.sytec-group.com
Email: sytec@sytec-group.com
Tel. +48 76 723 42 35
Fax. +48 76 723 42 22



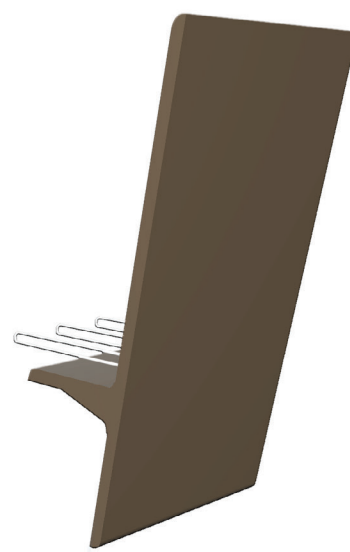
» COMPANY'S HISTORY

Sytec Ltd is a leader producer of polymer concrete elements and structures active in Poland since 1991 that belongs to the ANCOR SYTEC Group, previously known as ANCOR HMG Europe.

In early years, the company developed the manufacturing of polymer concrete electrolytic cells for non-ferrous metal refining. In later years, launched new products, including bridge cornices, drainage channels, street sumps, street inlet covers and wells, all in a variety of dimensions and shapes depending on the use and mechanical conditions. All production takes place in four manufacturing halls in our Polkowice plant, Lower Silesia Province.

Along the time we have obtained tremendous experience that allows our team of engineers and technicians to handle extensive type of non-standard contracts.

MG 50



> SKANSKA - Pl. Społeczny - Wrocław



» MG BRIDGE CORNICE

Bridge cornices are a part of the bridge structure placed on its outer face adhered to the bridge floor, that while pouring the concrete help as an external mould.

Bridge cornices protect the bridge infrastructure against the destructive effects of chemically active aqueous solutions performing also as a drip edge.

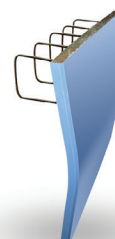
Cornices can be designed in different shapes and colours making the bridge appearance very attractive to the eye.



MG 01

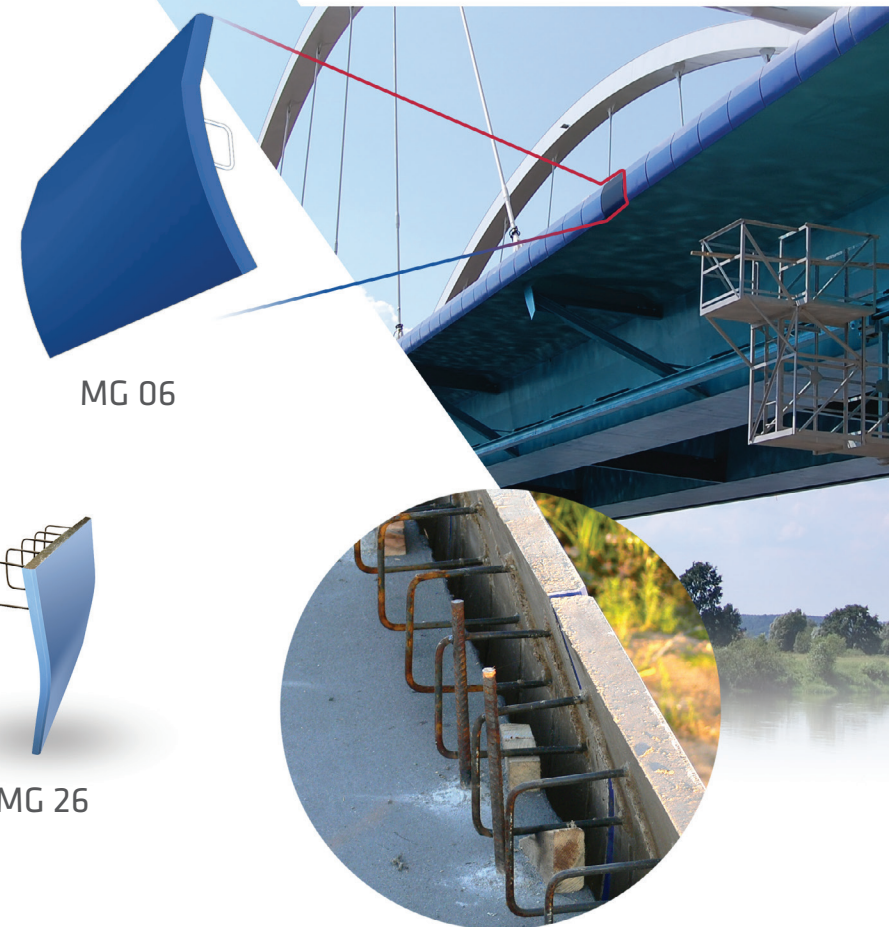


MG 10



MG 26

> BERGER BAU and STRABAG - KIRCHNER
Gorzów Wielkopolski Bypass Motorway



MG 06

Bridge cornices are made of polymer concrete with the outer surface normally covered with a reinforced gelcoat resin in variety of colours. They may be flat or profiled. Side balconies can be designed and manufactured providing room for bridge side post lighting.

Advantages of polymer concrete cornice panels:

- Possibility of obtaining coloured coating and attractive shapes
- Cornice panels provide a concrete framework with evident time savings
- Bridge cornices are lighter than traditional regular concrete reinforced panels
- Bridge cornices are permanently anchored to the bridge structure assuring long lasting operation
- Polymer concrete material provides highly better properties both mechanical and chemical compared with regular concrete



Cornice installation including preparation of side walk infra-structure and balconies for post lighting.

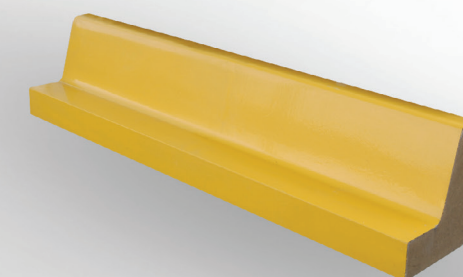
» WM BRIDGE DRAIN HOUSING

SYTEC bridge drain housing includes a metal inlet protected in a polymer concrete enclosure. This system is designed to collect and quickly dispose water into the the bridge rainwater drainage system. The bridge drain housing is placed in line along the kerb level. External surface may be supplied in colours to better identify drain points.



» MK BRIDGE KERB

Bridge kerb is a polymer concrete prefabricated structure used to limit the side walk or roadside from the roadway within the bridge area. Kerb's surface is normally coloured and provided with four steel anchoring hooks to better connect to the sidewalk structure.



MG 38

> ENERGOPOL Szczecin - The bridge in Kamień



» MSK SIDE WATER CHANNEL

The side water channel is made in polymer concrete and used to direct rain water from the road and sidewalk into the bridge draining system. It is installed along the road between roadway and kerb when road slopes are lower than 0.5%. It can be also gelcoat coloured.



> BILFINGER INFRASTRUCTURE S.A. - Bypass road Zambrów



» MS BRIDGE DRAIN

A bridge drain is an element intended for local collection of water from the bridge insulation level. It is made of polyester laminate, reinforced with glass fibre. It offers resistance, which is not lower than in case of steel drains and even much higher chemical resistance.

